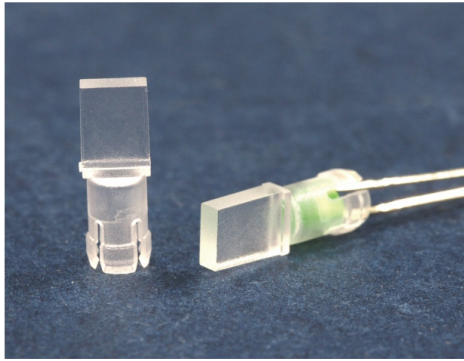


LED导光柱 LED PIPE



用途：可快速将 Ø3 LED 固定于机器面板上

MATERIAL : PC(UL)

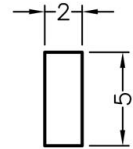
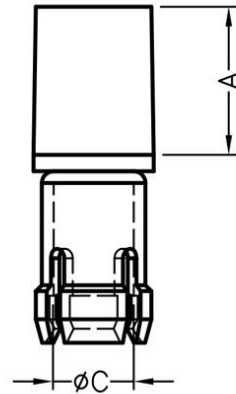
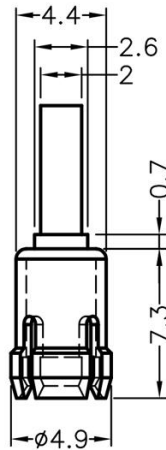
FLAME CLASS : 94V-0,94V-2

COLOR : TRANSPARENT

UNIT : mm

2

PART NO	A	C	PACKAGE
LEDLP-001	6.3	Ø3.4	1000
LEDLP-112	2.5	Ø3.4	1000



MOUNTING HOLE

CHASSIS Ø4.4
THICKNESS 1.57~3.2

LED导光柱 LED PIPE



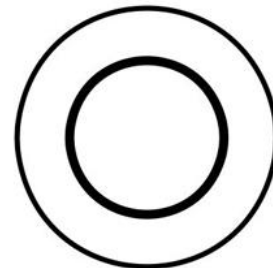
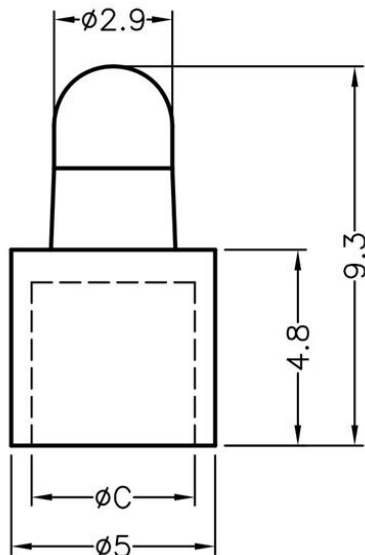
用途：用于LED导光柱

MATERIAL : PC(UL)

FLAME CLASS : 94V-0,94V-2

COLOR : TRANSPARENT

UNIT : mm



PART NO	C	PACKAGE
LEDLP-002	Ø4.0	1000